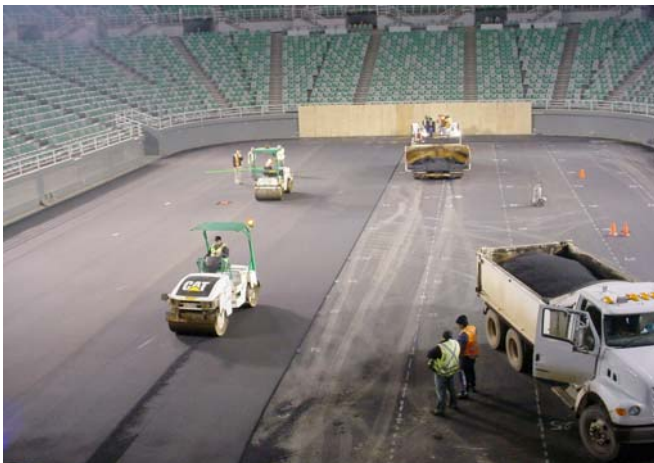


CIVIL CONSTRUCTION

Wm. Loud (Aust) Pty Ltd was established in 1874 and has been involved in civil construction works ever since. We later commenced installing synthetic outdoor sports facilities for athletics and games courts, and are industry leaders in the acrylic surfaces such as Plexipave, and polypropylene running tracks.

Wm. Loud employs three qualified Engineers and a Landscape Architect to oversee our civil works. We offer practical design advice for your project, and provide all required project management.

Wm. Loud has a reputation for high quality surface finishes required for sports and athletics. This was demonstrated when Melbourne and Olympic Parks chose Wm. Loud to upgrade all courts at the Melbourne Tennis Centre in 2007.



These works were completed to a high standard and on schedule.

Rod Laver Arena –2007

Wm. Loud (Aust) Pty Ltd undertakes a variety of civil projects, including driveways and roadways, carparks, heavy duty hardstands, school playgrounds, and a whole range of sports pavements from tennis courts to athletics tracks and hockey fields.



Multi- purpose Sports Area -Ivanhoe Girls Grammar School

Wm. Loud have been engaged on many prestigious projects in Melbourne, Victoria, and interstate. These include the Victorian Arts Centre, Melbourne University Athletics Facility, Ivanhoe Girls Grammar Sports Facility, Haileybury College Hockey Courts, Bunnings Carpark Vermont South, Melbourne Tennis Centre, numerous suburban and regional athletics tracks, and countless civil construction projects.

We operate our own asphalt paving machine and crew, and a full range of plant and equipment.



Wattle Park Golf Course Car Park